

MEDICARE DATA HUB

Medicare Spending, January–October 2020

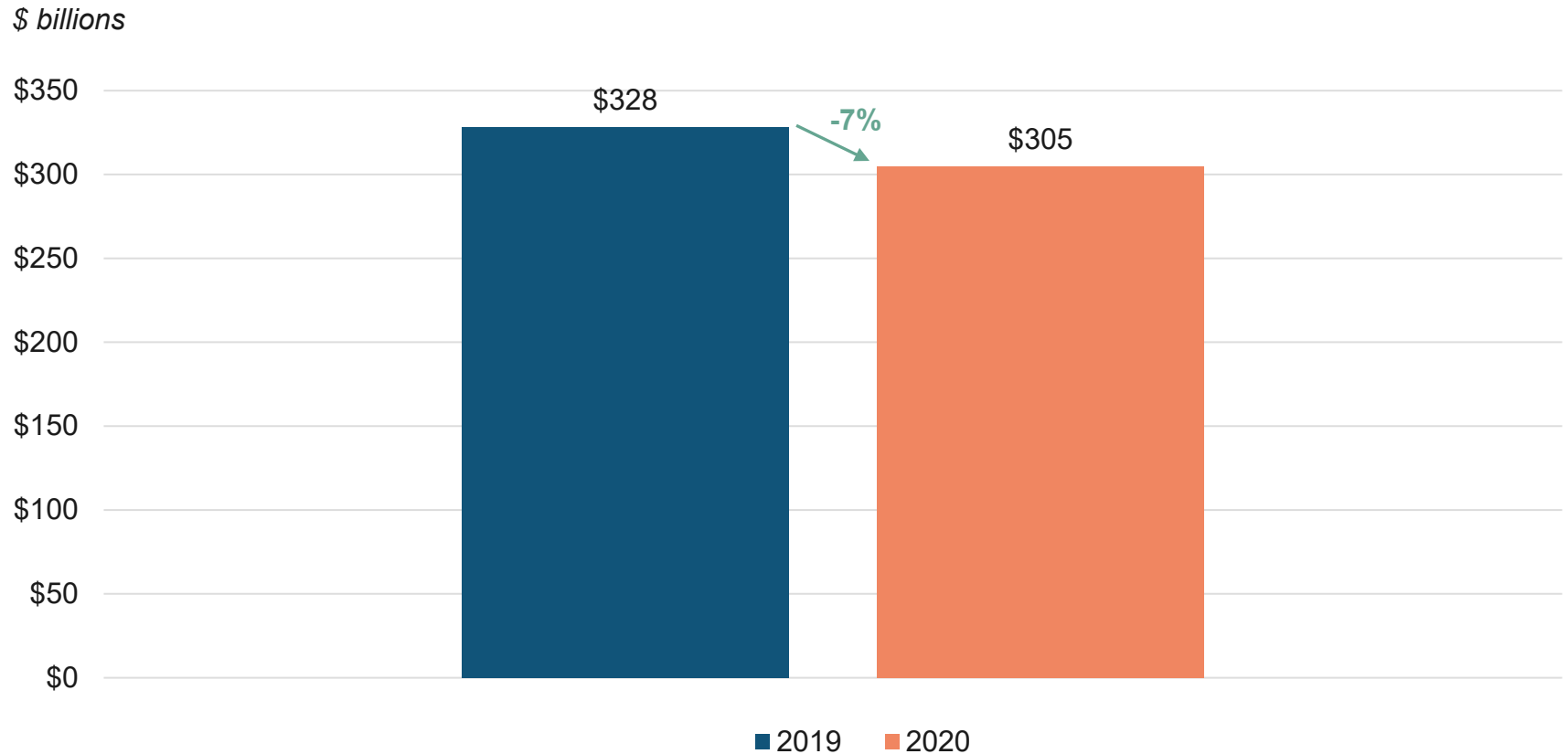
Commonwealth Fund Analysis of CareJourney Claims Data for
Traditional Medicare Beneficiaries



The
Commonwealth
Fund

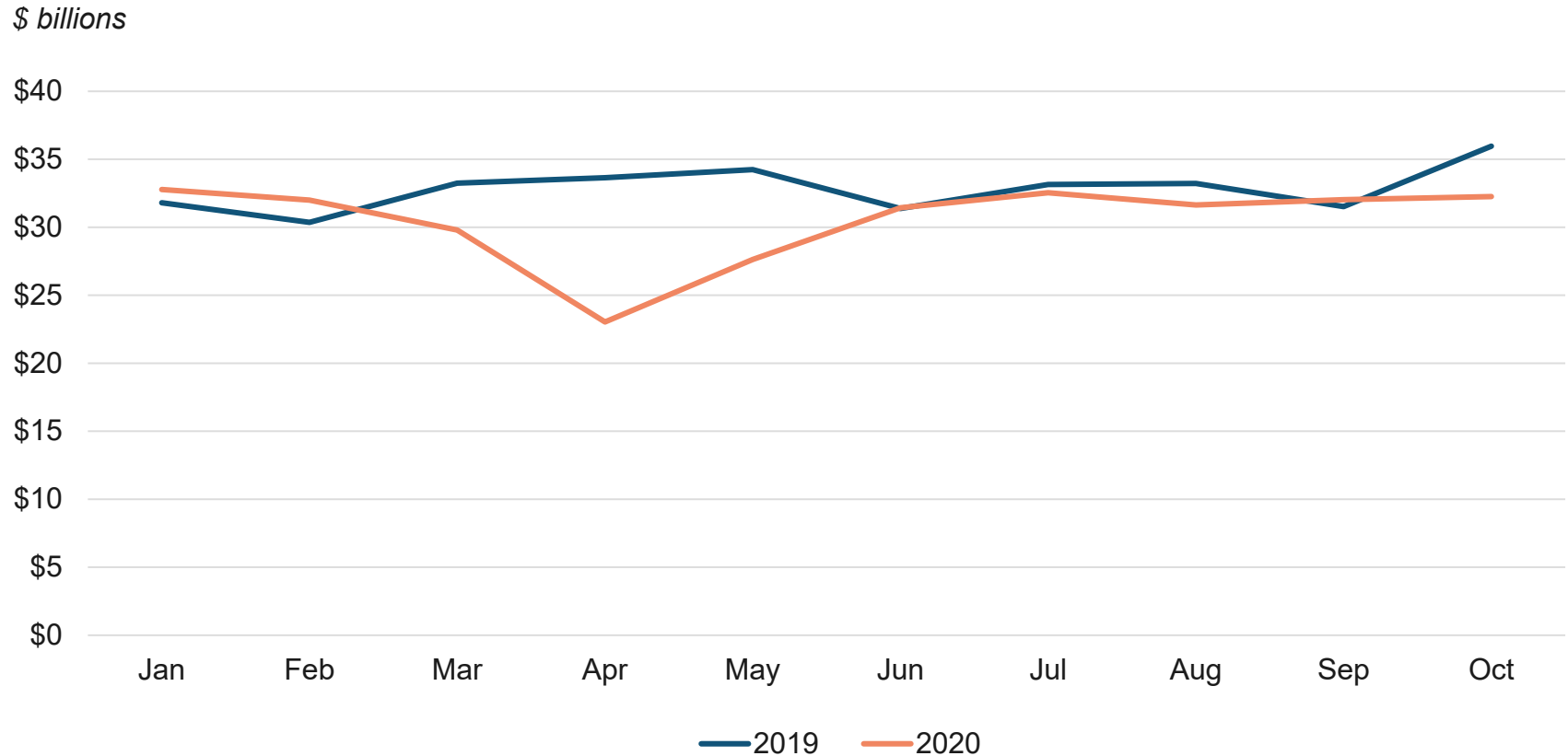
Overall, traditional Medicare spending was 7 percent less in 2020 compared to 2019.

Total aggregate traditional Medicare spending, 2019 vs. 2020



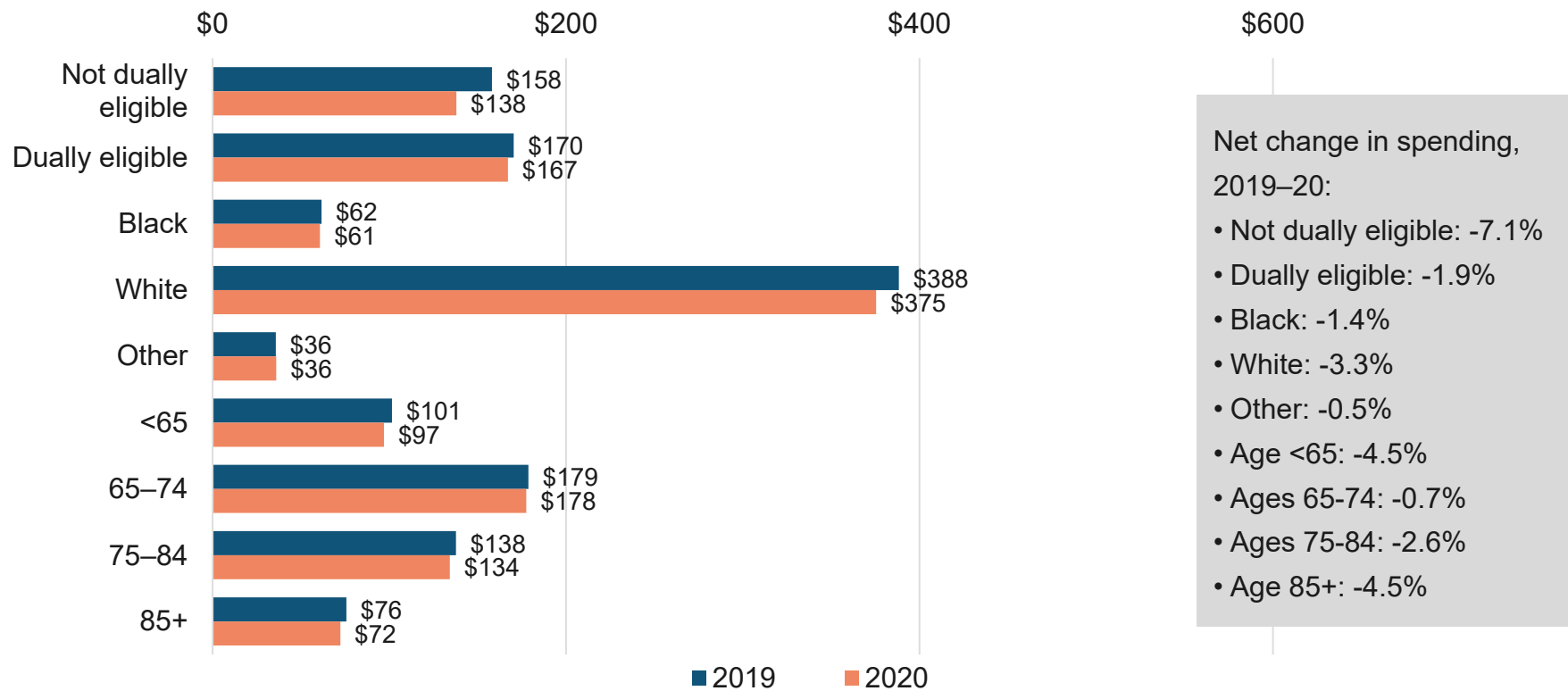
Compared to 2019, traditional Medicare spending dropped dramatically between March and May of 2020, before returning to previous levels.

Total aggregate traditional Medicare spending, by month



Traditional Medicare spending decreased more for white beneficiaries and beneficiaries not also enrolled in Medicaid than for other beneficiaries from 2019 to 2020.

Total aggregate traditional Medicare spending by dual eligibility, age, and race/ethnicity, 2019 vs. 2020 (in \$ billions)

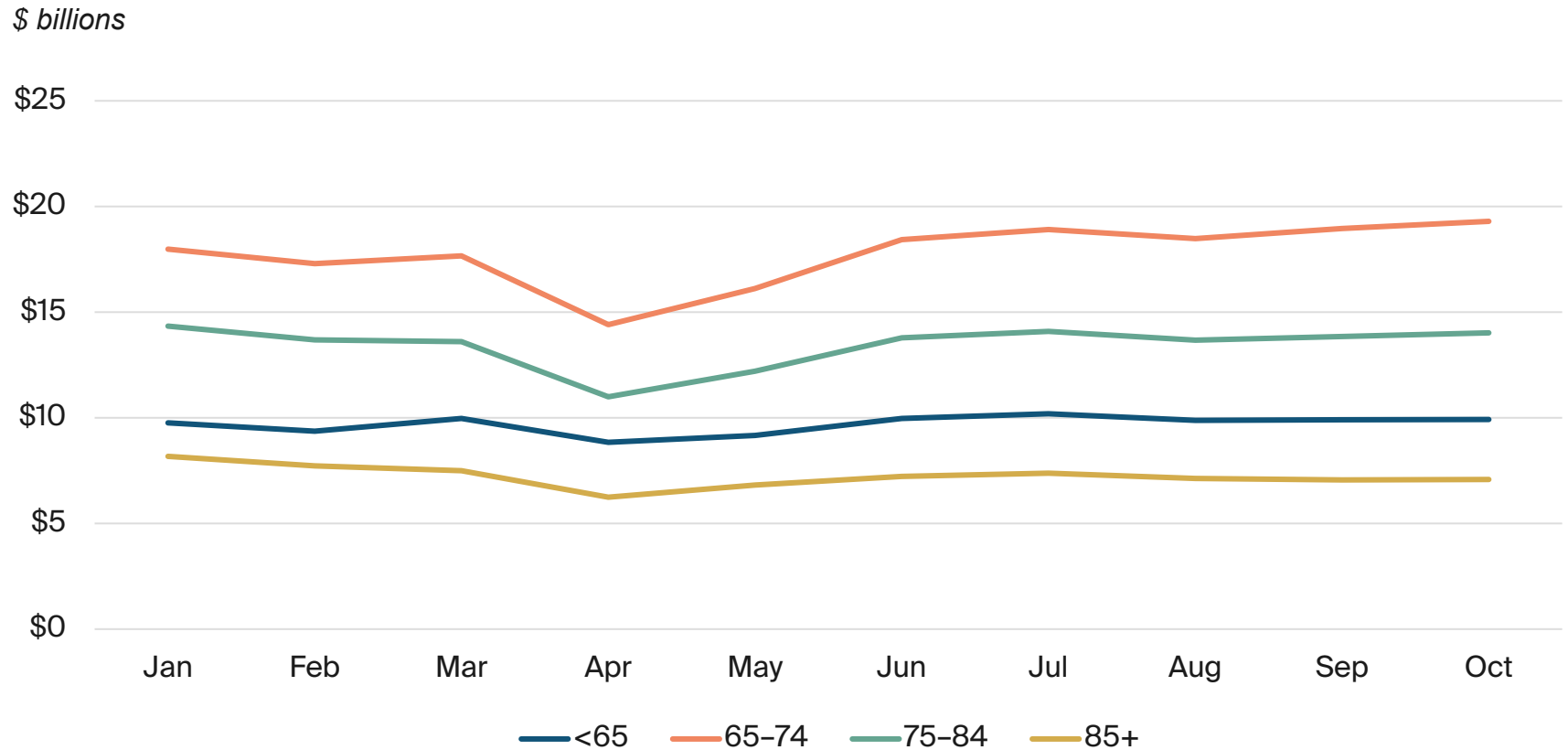


Net change in spending, 2019–20:

- Not dually eligible: -7.1%
- Dually eligible: -1.9%
- Black: -1.4%
- White: -3.3%
- Other: -0.5%
- Age <65: -4.5%
- Ages 65-74: -0.7%
- Ages 75-84: -2.6%
- Age 85+: -4.5%

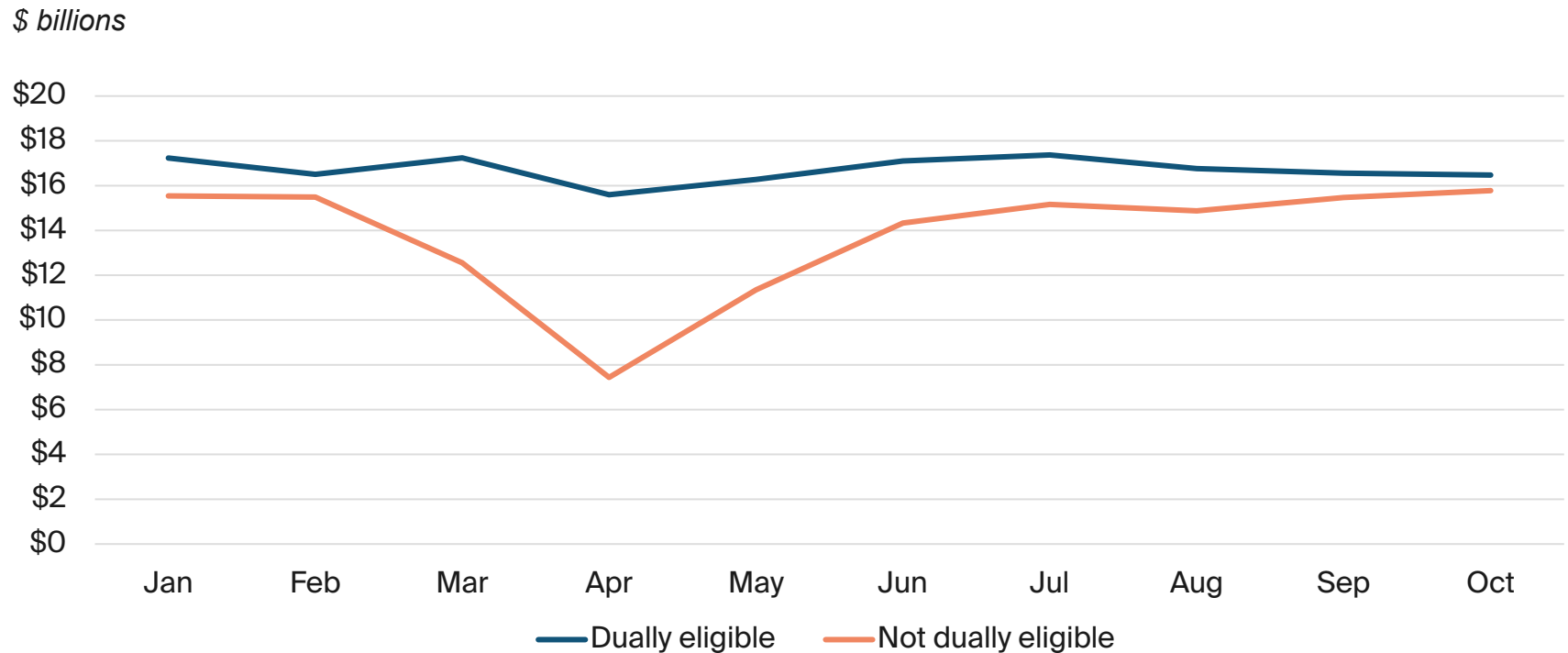
Traditional Medicare spending decreased most for beneficiaries ages 65–74 between March and April 2020.

Traditional Medicare spending, by age, January–October 2020



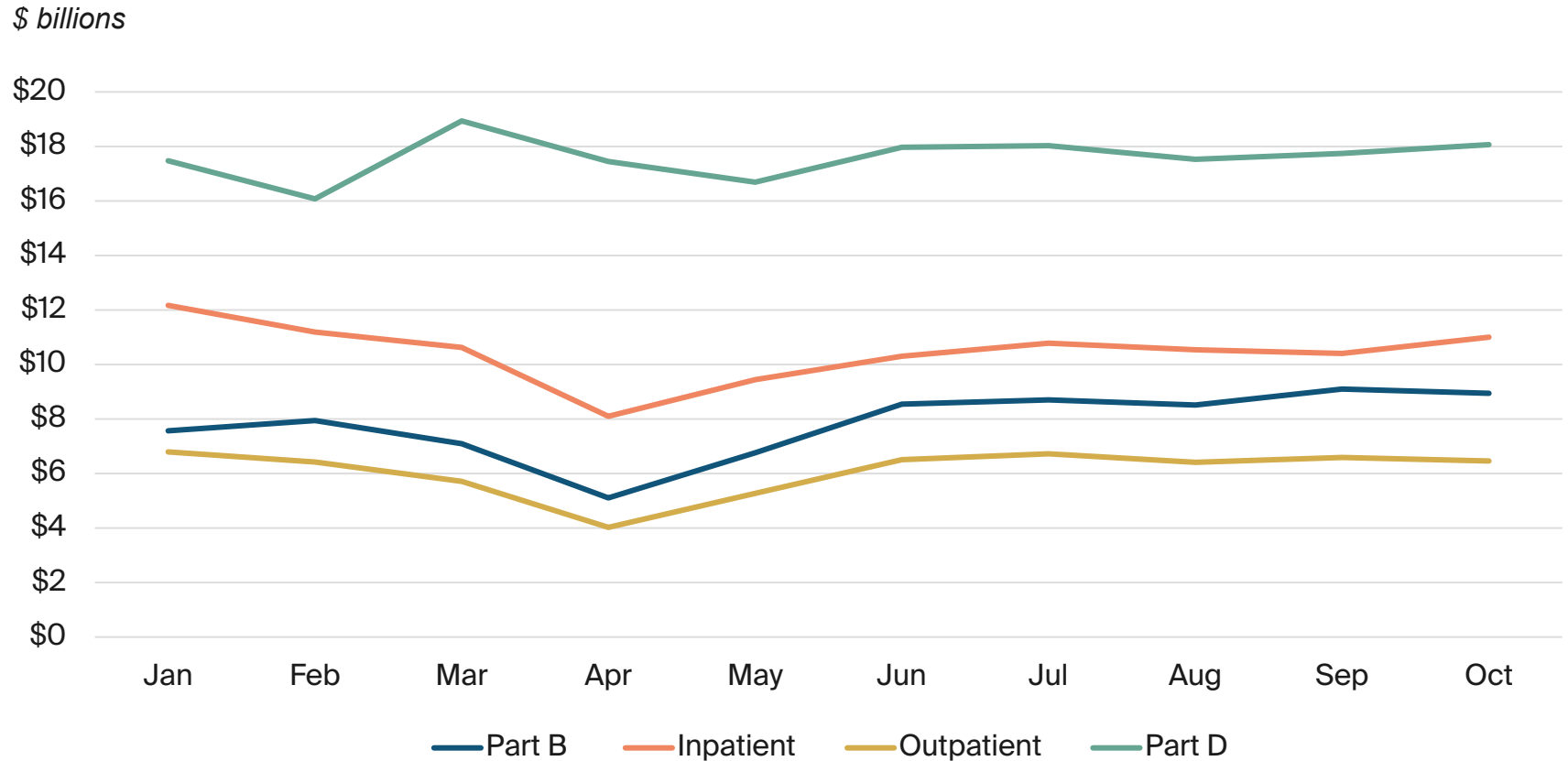
Traditional Medicare spending for dually eligible beneficiaries remained steady throughout 2020, while spending for other beneficiaries plummeted from February to April before returning to prepandemic levels by summer.

Traditional Medicare spending, by dual eligibility, January–October 2020



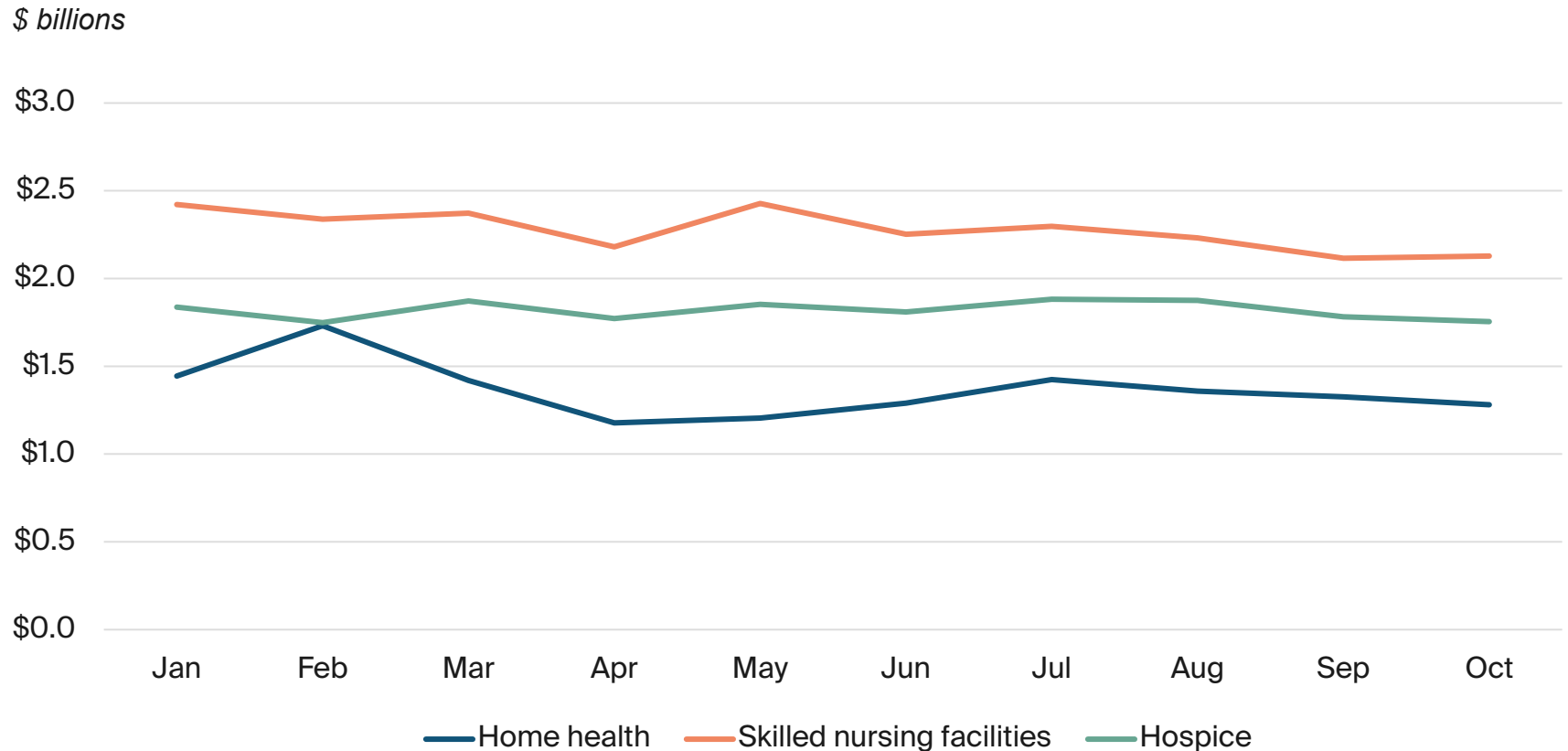
Inpatient, outpatient, and other Medicare Part B spending decreased in the early months of the pandemic.

Traditional Medicare spending, by service, January-October 2020

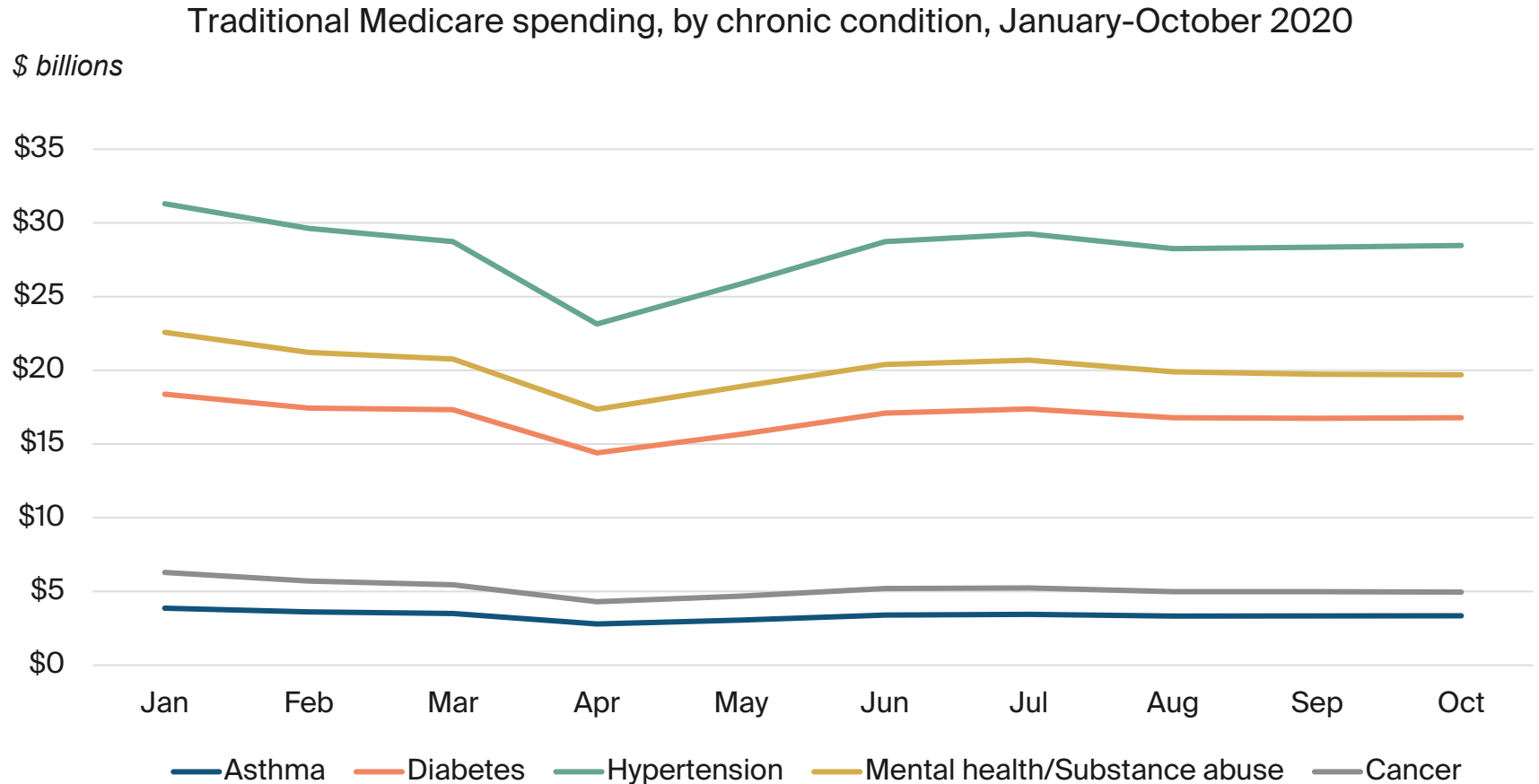


Traditional Medicare spending for skilled nursing and home health care decreased since the start of the pandemic.

Traditional Medicare spending, by service, January-October 2020

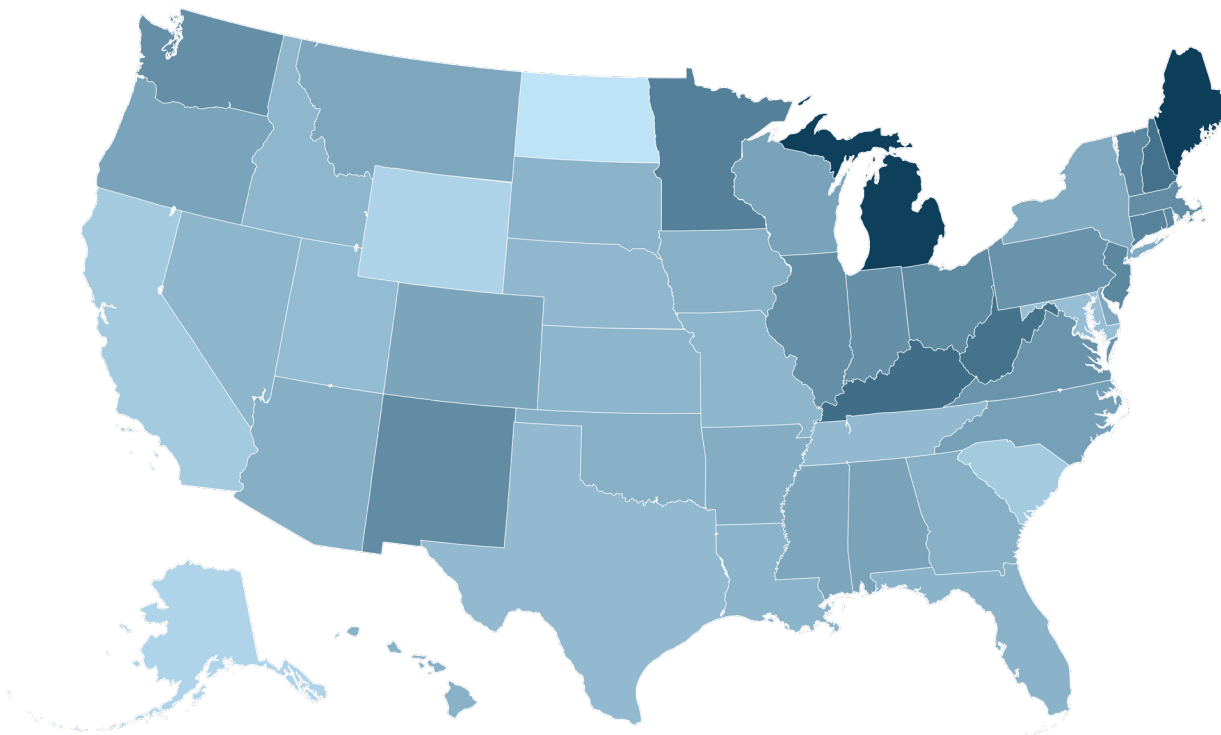


Traditional Medicare spending declined for many chronic conditions early during the pandemic.



Declines in traditional Medicare spending varied across states between 2019 and 2020.

Percent change in traditional Medicare spending 2019-20, by state



Powered by Bing
© GeoNames

Percent change in Medicare spending, 2019-20

-15.7% -1.8%